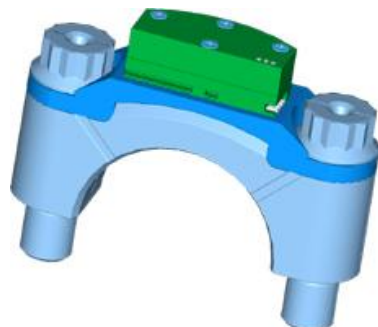


ROD SENSOR TELEMETRY 6 channel (T°C) or 2 channel strain



The ATCOM TELEMETRY System product was developed especially for the non-contact transmission of measurement on motion objects in mechanical engineering.

Technical Specifications :

	Temperature	Strain
Maximum sample rate :	100 Hz	40 000Hz
Resolution :	+/- 0.2°C on full scale	12 bits
Temperature range :	0°C 1200°C	
Ful Scale Output	-5/+5V or 0-10V	
Operating temperature	0°C/+130°C	
Power Supply :	Batterie (module) 3.6V or induction	

Sensor Specifications :

Sensors	Thermocouple K,J, N	120 to 1200Ohm
---------	---------------------	----------------

RF Specification :

digital PCM
Line-of-sight distance : 80 mm
Maximum operating temperature 130°C
Maximum acceleration : 20000g
Weight : 5 g
Sealed to IP65