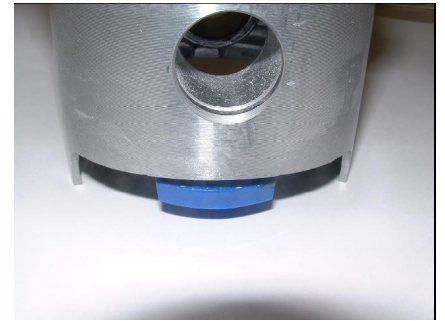
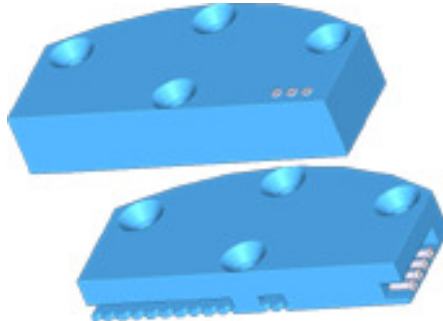


## Piston SENSOR TELEMETRY 6 channels (T°C or Distance, Pressure, Force sensors)



The ATCOM TELEMETRY System product was developed especially for the non-contact transmission of measurement on motion objects in mechanical engineering.

### **Technical Specifications :**

Maximum sample rate 100 Hz  
Resolution : +/- 0.2°C on full scale  
Temperature range : 0°C 1200 °C  
Full Scale Output -5/+5V or 0-10V  
Supply current < 3 mA (according to sample rate)  
9 – 18 Volt supply range  
Operating temperature 0 °C/+130 °C  
Power Supply : Batterie (module) or induction

### **Sensor Specifications :**

6 channels thermocouple type K ,Force sensors  
or 2 Distance Micro epsilon sensor  
or 1 ICP type transducer

### **RF Specification :**

digital PCM  
Line-of-sight distance : 80 mm  
Maximum operating temperature 125 °C (optional 135 °C)  
Maximum acceleration : 20000g  
Weight : 5 g  
Sealed to IP65