



15 Rue Jean Bertin, BP79
45430 CHECY France
Phone (33)238 466 300
Email : sales@atcom.fr
<http://www.atcom.fr>

ATCOM TELEMETRIE

Telemetry, Slip-Ring and Wireless Sensors

COPYRIGHT ATCOM TELEMETRIE



ATCOM Télémétrie

- Based at Chécy (Orléans, FRANCE)
- Created 20 years ago
- 1987 to 2001 telecommunication and radio Li
(Phone terminal, Remote control, EMC...)
- 2001 to 2015 Embedded Telemetry

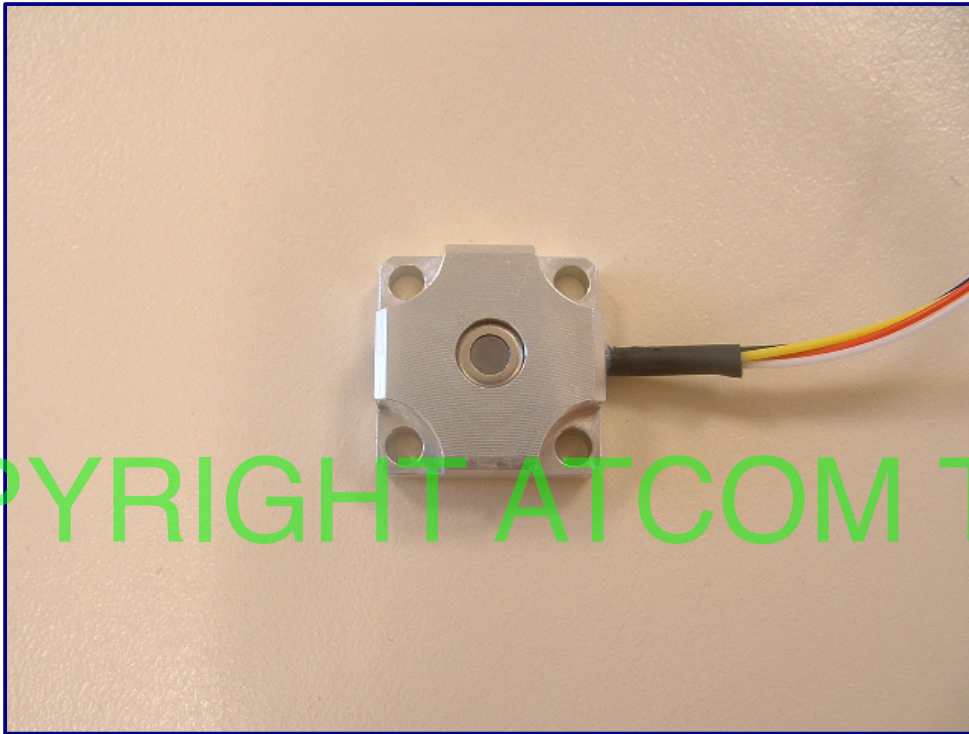


The Team

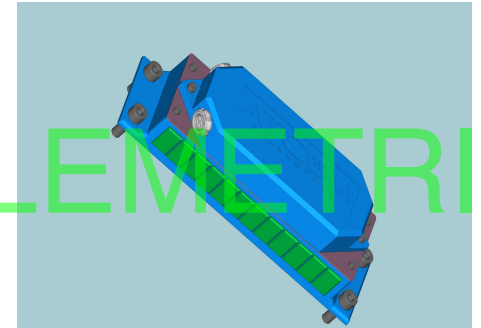
- ✓ 13 persons
- ✓ 1 engineer specialised in each domain
 - analog : sensor conditioning, Filtering
 - Digital : FPGA, DSP, ADC, DAC
 - Radio : RF transmission, antennas (1MHz- 5GHz)
 - Printed board design
 - Signal processing
 - EMC
- ✓ Small series production



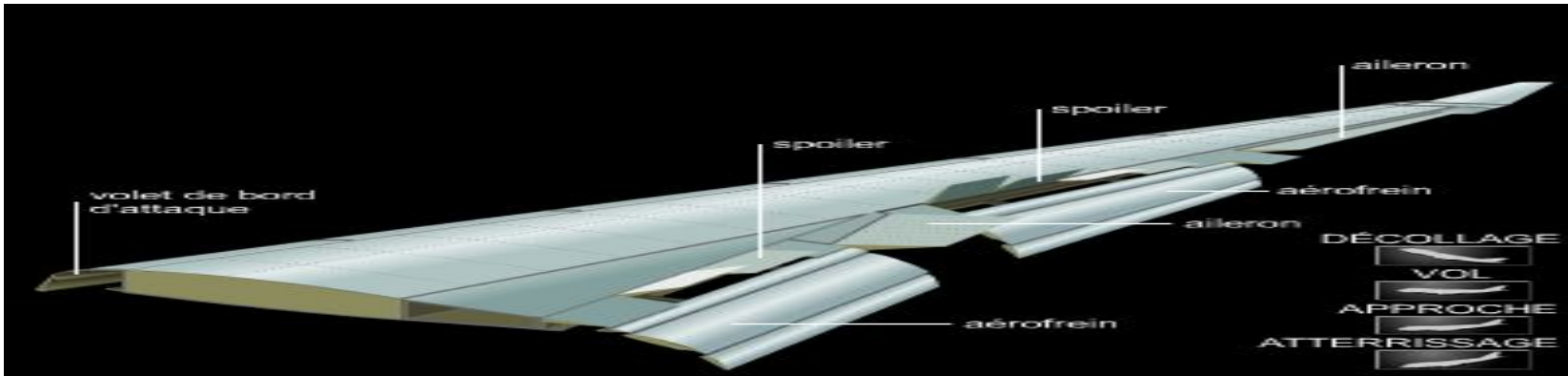
Transmission data by laser



Multiplexers aircraft wings sensors



<http://www.atcom.fr/categorie/conditionneurs-amplificateurs-de-capteurs-fr-fr/>

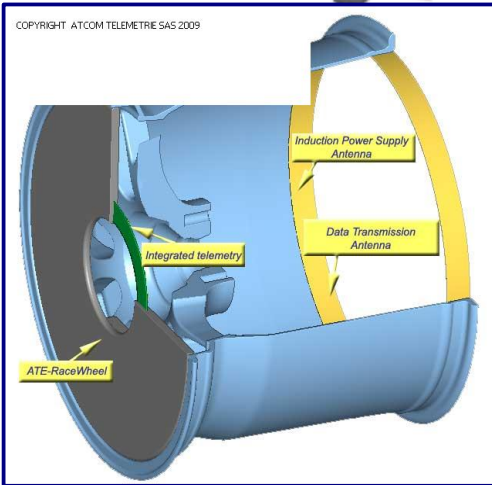
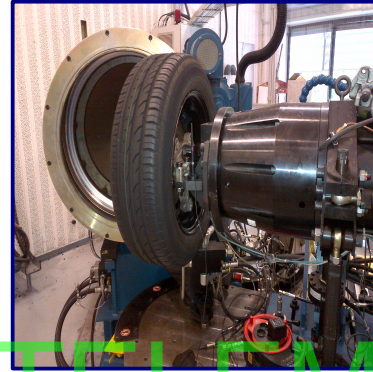
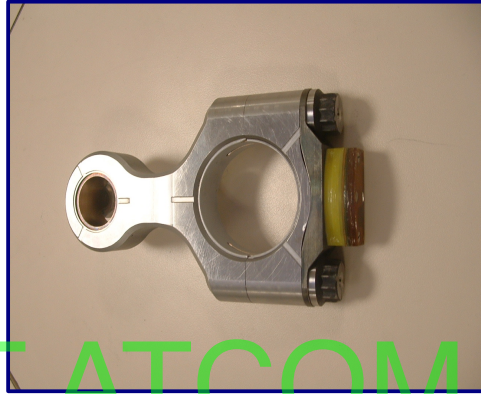


Standard Products



COPYRIGHT ATCOM TELEMETRIE

Specific products

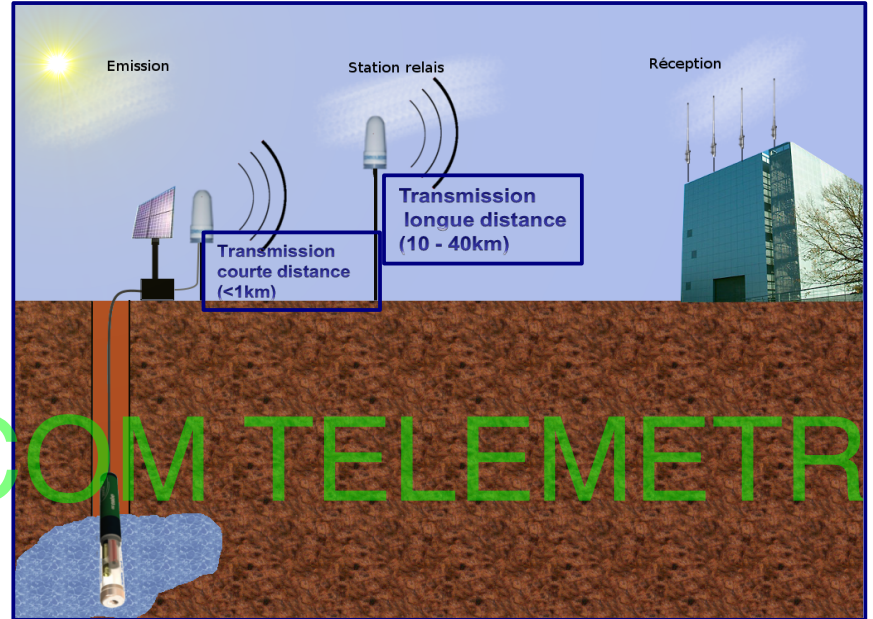
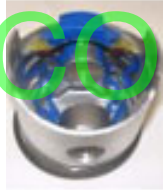


Automotive Sports

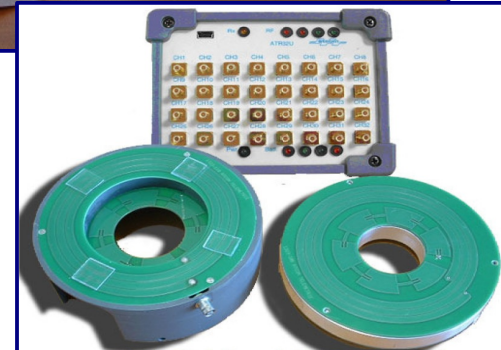


COPYRIGHT ATCOM TELEMETRIE

Industry



Industry

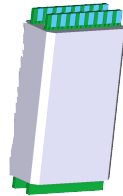


Military applications



COPYRIGHT ATCOM TELEMETRIE

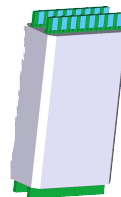
Aeronautical applications



module 4 jauges statiques

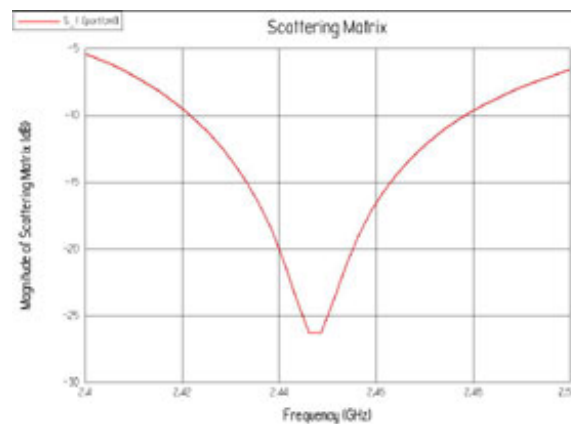
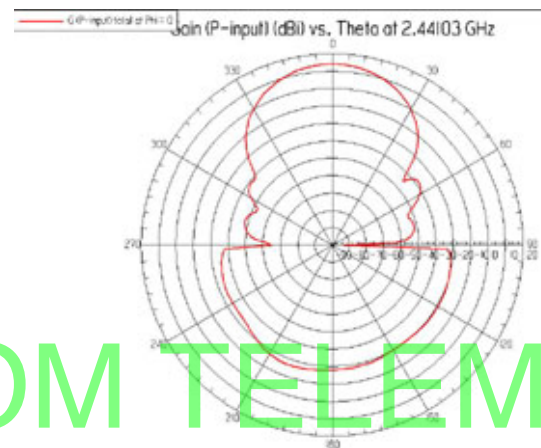
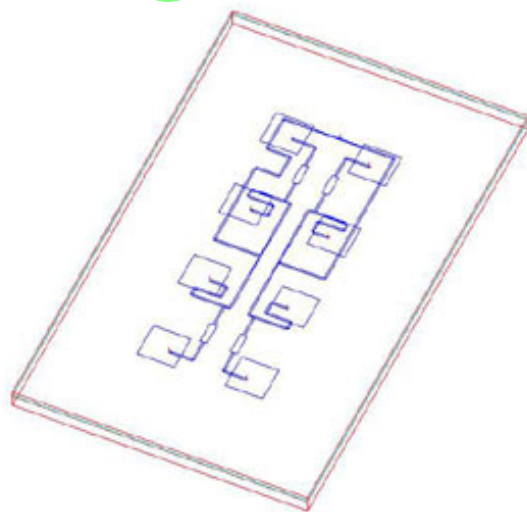
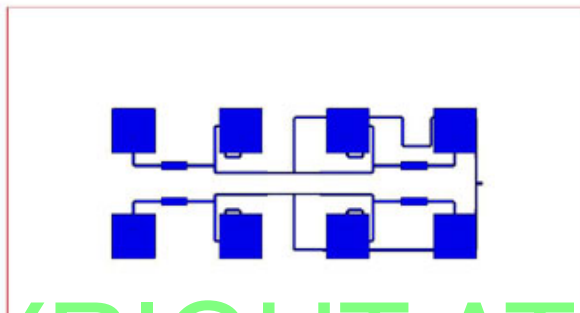


Aeronautical applications



module 4 jauges statiques

Antennas design

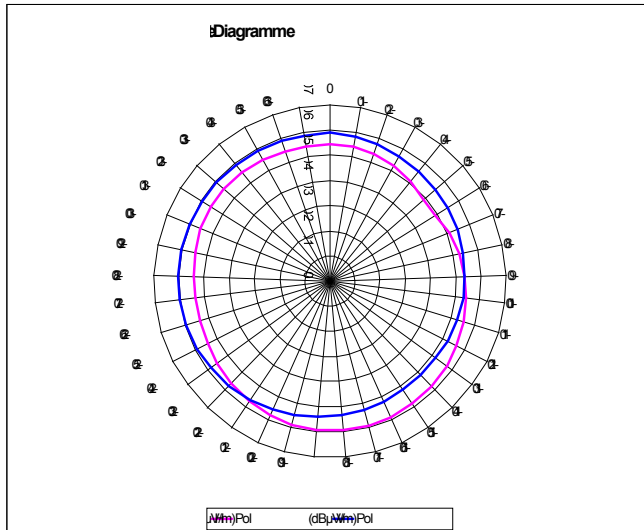


COPYRIGHT ATCOM TELEMETRIE

EMC



COPYRIGHT ATCOM TELEMETRIE





Supervision

Thermocouples

Numéro 1 T° esclave 122 °C

Voie 1 255 °C	Voie 5 290 °C
Voie 2 270 °C	Voie 6 305 °C
Voie 3 275 °C	Voie 7 312 °C
Voie 4 282 °C	Voie 8 323 °C

Configuration des modules jauges

Numéro 1 Courant 10.0 mA Mode Sinus

Voie 1	Gain 150	Bande Passante 50 kHz	<input type="button" value="Envoyer"/>
Voie 2	Gain 150	Bande Passante 50 kHz	<input type="button" value="Envoyer"/>
Voie 3	Gain 150	Bande Passante 50 kHz	<input type="button" value="Envoyer"/>
Voie 4	Gain 150	Bande Passante 50 kHz	<input type="button" value="Envoyer"/>

COM9

Système

Type: HP

Nb M4J: 12

Nb M8TH: 1

Module maître

Tension alim. 3.7 V ■

Température 123 °C COM7

Tension redressée 25 V

Wattmètre (HP)

Puissance incidente dBm ■

Puissance réfléchie dBm COM8

Marche/Arrêt (BP)

Modules RF

Jauges

Numéro 1 ■


Voie 1 Voie 3 COM6

Voie 2 Voie 4

Acquitement Configuration Modules Jauges

v/m	1	2	3	4	5	6	7	8	9	10	11	12
1	■	■	■	■	■	■	■	■	■	■	■	■
2	■	■	■	■	■	■	■	■	■	■	■	■
3	■	■	■	■	■	■	■	■	■	■	■	■
4	■	■	■	■	■	■	■	■	■	■	■	■

COM5



ORLÈANS-FRANCE

v0.3.16 alpha

COPYRIGHT ATCOM TELEMETRIE